



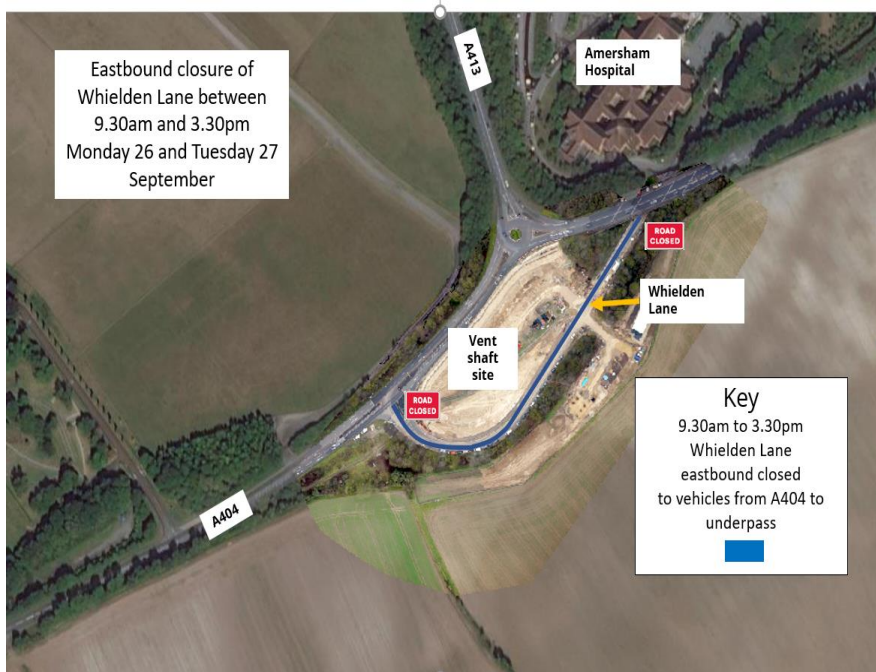
Notice of directional road closure, Whielden Lane, Amersham

September 2022 | www.hs2.org.uk

High Speed Two (HS2) is the new high speed railway for Britain. We are following Government and Public Health England (PHE) advice on working safely during the pandemic. As we increase face to face engagement, in addition to virtual engagement, we will ensure all events and meetings adhere to the guidelines. The health and safety of our workforce and the communities we work within is our priority. If you have any questions about this, please contact our Helpdesk to find out more.

Diversion of eastbound traffic into Amersham from A404

We will be carrying out surveys before, during, and after our tunnelling and construction works for the Chiltern Tunnel. The surveys will take place in Whielden Lane, and we will need to close the road to eastbound traffic whilst surveying. The closure will be in operation between 9.30am and 3.30pm only to minimise disruption to peak traffic. The map below shows the section of road that will be closed.



Duration of works

Monday 26 to Tuesday 27 September 2022

What to expect

Eastbound directional road closure on Whielden Lane and diversion signs placed to help road users

Closure from 9.30am to 3.30pm on both days to minimise disruption to peak traffic

What we will do

Maintain traffic flows wherever possible and fully reopen the road as soon as possible

Work to ensure any impacts are kept to a minimum

If you have a question about HS2 or our works, please contact our HS2 Helpdesk team on 08081 434 434 or email hs2enquiries@hs2.org.uk

Keeping you informed

We are committed to keeping you informed about work on HS2. This includes ensuring you know what to expect and when to expect it, as well as how we can help you.

The Residents' Commissioner

The independent Residents' Commissioner oversees and monitors our commitments to you.

The commissioner's reports and our responses can be found at www.gov.uk/government/collections/hs2-ltd-residents-commissioner

The Residents' Commissioner makes sure we fulfil the commitments in the HS2 Community Engagement Strategy (<https://bit.ly/3oOA25j>).

The Residents' Commissioner can be contacted on: residentscommissioner@hs2.org.uk

Construction Commissioner

The independent Construction Commissioner regularly meets our Chief Executive Officer to raise any concerns or emerging trends across HS2.

The Construction Commissioner's role has been developed to monitor the way we manage and respond to construction complaints.

The commissioner mediates on disputes about construction, involving individuals and organisations, that we can't resolve. The commissioner advises members of the public about how to make a complaint about construction.

The Construction Commissioner can be contacted on: complaints@hs2-cc.org.uk

Property and compensation

You can find out about HS2 and properties along the route by visiting:

www.gov.uk/government/collections/hs2-property

Find out if you can claim compensation at:

www.gov.uk/claim-compensation-if-affected-by-hs2

Holding us to account

If you are unhappy for any reason, you can make a complaint by contacting the HS2 Helpdesk. For more details on our complaints process, please visit:

www.hs2.org.uk/in-your-area/contact-us/how-to-complain/

Reference number: HS2-MW-Align-Ph1-Ar-Ce-C1-Prog-works-3-09/09/2022

High Speed Two (HS2) Limited, registered in England and Wales.

Registered office: Two Snowhill, Snow Hill Queensway, Birmingham B4 6GA.

Company registration number: 06791686. VAT registration number: 888 8512 56

Contact us

Contact our HS2 Helpdesk team all day, every day of the year on:

 Freephone **08081 434 434**

Minicom **08081 456 472**

 Email **HS2enquiries@hs2.org.uk**

 Write to:

FREEPOST

HS2 Community Engagement

Website **www.hs2.org.uk**

To keep up to date with what is happening in your local area, visit: **www.HS2inyourarea.co.uk**

Please contact us if you'd like a free copy of this document in large print, Braille, audio or 'easy read' format. You can also contact us for help and information in a different language.

HS2 Ltd is committed to protecting personal information. If you wish to know more about how we use your personal information please see our Privacy Notice:

<https://www.gov.uk/government/publications/high-speed-two-ltd-privacy-notice>