



Construction update – Chalfont St Giles ventilation shaft

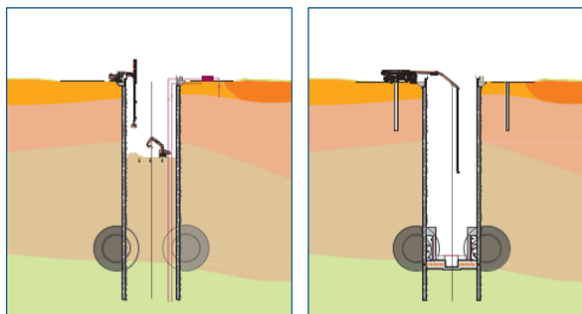
December 2021 | www.hs2.org.uk

High Speed Two (HS2) is the new high speed railway for Britain. We are following Government and Public Health England (PHE) advice on working safely during the pandemic. The health and safety of our workforce and communities we work within is a priority. If you have any questions about this, please contact our Helpdesk to find out more

What works have taken place since the summer?

The enabling works contractor, Fusion, have been working to complete the widening of Bottom House Farm Lane up to the vent shaft site. This is due to complete 17 December 2021. The lane will then open to the public for vehicles, pedestrians, cyclists and equestrians to just before the vent shaft site.

On the vent shaft site, following the completion of D-walling, where the outer rim of the shaft was constructed, the last two months have seen the inside of the shaft excavated and the spoil (soil) transported to our main site at the South Portal, off the M25. We have also been transporting the spoil excavated during the initial works to prepare the vent shaft site.



Shaft excavation

The ground around the tunnel entry points is prepared for the arrival of the Tunnel Boring Machines (TBMs).

Earth is removed from within the walls with excavators.

Groundwater in the shaft is pumped out to local recharge wells.

Secant pile, base slab, and collar construction

The outer walls of the headhouse are constructed using a technique called secant piling. When the earth from within the shaft walls has been excavated, concrete is poured into the shaft to create the base slab.

A structure called a collar is constructed to support the shaft when the TBMs arrive and pass through.

Phase of works

Until February 2022, Fusion will be undertaking works to complete Bottom House Farm Lane widening and for landscaping/hedge planting on Bottom House Farm Lane between 8am and 6pm Monday to Friday and 8am to 1pm Saturday

In late December 2021 and early January 2022, road markings on the temporary access road will be undertaken from 8am to 6pm Monday to Friday

To March 2022, the next phase of shaft construction works will take place 7am to 10pm Monday to Saturday

What we will do

Do all we can to minimise disruption

If you have a question about HS2 or our works, please contact our HS2 Helpdesk team on 08081 434 434 or email hs2enquiries@hs2.org.uk

Construction update for CSG

Notification



www.hs2.org.uk

Next phase of Fusion works and shaft construction

Fusion planting works will start on Tuesday 4 January 2022, and weather permitting will take one month to complete. A new permanent hedgerow alongside the completed widened Lane, between the River Misbourne and Upper Bottom House Farm Lane will be planted. To undertake this work safely, vehicle access along the Lane between the Granary and Upper Bottom House Farm will be restricted during working hours. Alternative vehicle access for local properties and businesses will be provided through a local diversion via the adjacent temporary access road. Outside of working hours, the Lane will be open to public vehicles as far as Upper Bottom House Farm.

The planting team will use mobile welfare vans/units for the planting works. There will be a small volume of ground mulch and compost being delivered and added to the verge to improve the soil condition and during the planting pedestrian, cyclist and equestrian access will be controlled by traffic marshals. There will be some occasional local disruption by the equipment being used as part of the soil improvement works and a road sweeper will also be in use.

Shaft construction and hours of work

Towards the end of December, we will be forming the bottom (base slab) of the shaft. This will involve a continuous concrete pour for one day over several hours. The pour will normally start around 7am and will continue until complete which may be into the evening. We have consent from Buckinghamshire Council for this activity. Following the base slab pour, works will continue to create the collar to support the shaft for when the TBMs pass through. The current programme will see the TBMs pass through the shaft in August 2022. For construction at the vent shaft the hours of work are 7am to 10pm Monday to Saturday with one hours start up and shut down outside of those hours. For HGV movements, apart from concrete deliveries or abnormal loads, all deliveries to and from the site, as far as reasonably practicable, will be between 7am and 10pm.

The vent shaft site has seen a lot of different equipment come to the site for the various construction phases, as you can see from the picture below. Early next year a tower crane will be erected on site to move material around as we start work on the internal structures before and after the TBMs pass through. The height of the crane will be around 25 metres.



Contact our HS2 Helpdesk team on **08081 434 434**

Construction update for CSG

Notification



www.hs2.org.uk

What is the current programme for construction?

The TBMs are due in the summer of next year. Once they have passed through, works will continue on the internal construction of the shaft. We aim to begin constructing the vent shaft head house late 2023. Landscaping will take place from late 2024 with a planned completion date for the site in late 2024.

What will the final headhouse look like?

Below is an artist impression of what the headhouse and the other buildings on the vent shaft site will look like following completion.



Keeping you informed

We are committed to keeping you informed about work on HS2. This includes ensuring you know what to expect and when to expect it, as well as how we can help.

Residents' Charter and Commissioner

The Residents' Charter is our promise to communicate as clearly as we possibly can with people who live along or near the HS2 route.

www.gov.uk/government/publications/hs2-residents-charter

We also have an independent Residents' Commissioner whose job is to make sure we keep to the promises we make in the Charter and to keep it under constant review. Find reports at:

www.gov.uk/government/collections/hs2-ltd-residents-commissioner

You can contact the Commissioner at: residentscommissioner@hs2.org.uk

Construction Commissioner

The Construction Commissioner's role is to mediate and monitor the way in which HS2 Ltd manages and responds to construction complaints. You can contact the Construction Commissioner by emailing:

complaints@hs2-cc.org.uk

Property and compensation

You can find out all about HS2 and properties along the line of route by visiting:

www.gov.uk/government/collections/hs2-property

Find out if you're eligible for compensation at:

www.gov.uk/claim-compensation-if-affected-by-hs2

Holding us to account

If you are unhappy for any reason you can make a complaint by contacting our HS2 Helpdesk team. For more details on our complaints process, please visit our website:

www.hs2.org.uk/how-to-complain

Contact Us

Contact our HS2 Helpdesk team all day, every day of the year on:

 Freephone **08081 434 434**

 Minicom **08081 456 472**

 Email **hs2enquiries@hs2.org.uk**

Write to:

FREEPOST

HS2 Community Engagement

Website **www.hs2.org.uk**

To keep up to date with what is happening in your local area, visit:

www.hs2inyourarea.co.uk

Please contact us if you'd like a free copy of this document in large print, Braille, audio or easy read. You can also contact us for help and information in a different language.

HS2 Ltd is committed to protecting personal information. If you wish to know more about how we use your personal information please see our Privacy Notice <https://www.gov.uk/government/publications/high-speed-two-ltd-privacy-notice>

Reference number: HS2-MW-Align-Ph1-Ar-Ce-C2-Prog-works-24-15/12/2021

High Speed Two (HS2) Limited, registered in England and Wales.

Registered office: Two Snowhill, Snow Hill Queensway, Birmingham B4 6GA.

Company registration number: 06791686. VAT registration number: 888 8512 56.